



***Y PWYLLGOR
CYNLLUNIO***

**PLANNING
COMMITTEE**

20 MEDI 2018

20 SEPTEMBER 2018

***RHANBARTH Y
GORLLEWIN***

**AREA
WEST**



***CEISIADAU YR ARGYMHELLIR EU
BOD YN CAEL EU CYMERADWYO***

**APPLICATIONS RECOMMENDED
FOR APPROVAL**



W/18258

W/18258



W/18258



W/18528



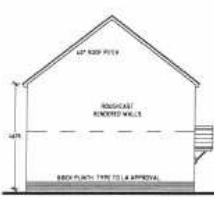
W/18258



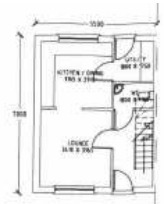
FRONT ELEVATION
HOUSE TYPE P (2 BED)
SCALE 1:100



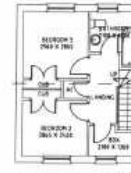
REAR ELEVATION
SCALE 1:100



SIDE ELEVATION
SCALE 1:100



GROUND FLOOR LAYOUT
HOUSE TYPE P (2 BED)
SCALE 1:100



FIRST FLOOR LAYOUT
SCALE 1:100



FRONT ELEVATION
HOUSE TYPE Q (3 BED)
SCALE 1:100



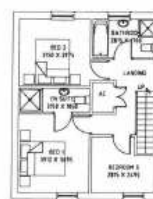
REAR ELEVATION
SCALE 1:100



SIDE ELEVATION
SCALE 1:100



GROUND FLOOR LAYOUT
HOUSE TYPE Q (3 BED)
SCALE 1:100



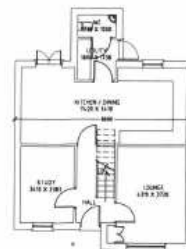
FIRST FLOOR LAYOUT
SCALE 1:100



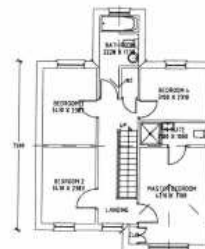
FRONT ELEVATION
HOUSE TYPE R (4 BED)
SCALE 1:100



SIDE ELEVATION
SCALE 1:100



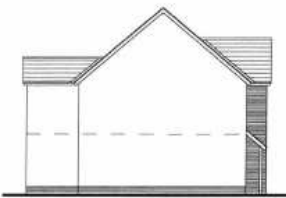
GROUND FLOOR LAYOUT
HOUSE TYPE R (4 BED)
SCALE 1:100



FIRST FLOOR LAYOUT
SCALE 1:100



REAR ELEVATION
SCALE 1:100



SIDE ELEVATION
SCALE 1:100

Rev.	Comments	Date
A	Amended Plans	06.17

Drawing Recorded	
CDM Principal Designer	
Status:	PLANNING
Client:	NEWCASTLE EMLYN PARTNERSHIP



HARRIES
PLANNING DESIGN MANAGEMENT

Heriban, Eglwysfaera, Pembrokeshire, SA41 3UP, Wales.
T: 01239 881 699 F: 01239 881 455 www.hpdm.co.uk

Project: Proposed Housing at
Maes Y Derw,
Newcastle Emlyn,
Carmarthenshire.

THE BRITISH ASSESSMENT BUREAU
ISO9001
Certificate No. 11600

Drawing Title: PLANS & ELEVATIONS AS PROPOSED			
Scale: -	Drawn By: DJM	Checked: WTH	Date: 22.01.2008
Job No: 022	Drawing No: 04	Rev: A	

W/18258



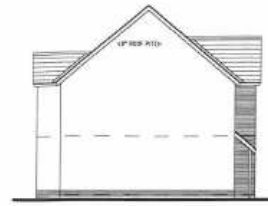
FRONT ELEVATION
HOUSE TYPE S (4 BED)
SCALE 1:100



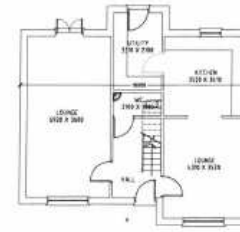
SIDE ELEVATION
SCALE 1:100



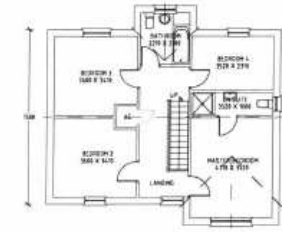
REAR ELEVATION
SCALE 1:100



SIDE ELEVATION
SCALE 1:100



GROUND FLOOR LAYOUT
HOUSE TYPE S (4 BED)
SCALE 1:100



FIRST FLOOR LAYOUT
SCALE 1:100



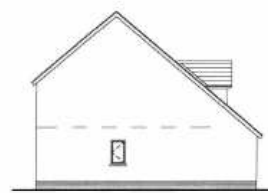
FRONT ELEVATION
HOUSE TYPE T (3 BED)
SCALE 1:100



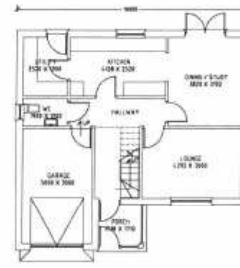
SIDE ELEVATION
SCALE 1:100



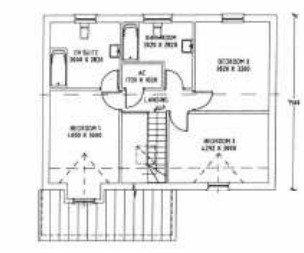
REAR ELEVATION
SCALE 1:100



SIDE ELEVATION
SCALE 1:100



GROUND FLOOR LAYOUT
HOUSE TYPE T (3 BED)
SCALE 1:100



FIRST FLOOR LAYOUT
SCALE 1:100



FRONT ELEVATION
HOUSE TYPE V (3 BED)
SCALE 1:100



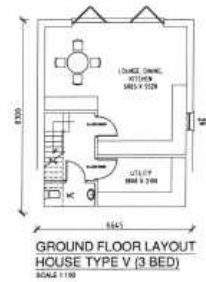
SIDE ELEVATION
SCALE 1:100



REAR ELEVATION
SCALE 1:100



SIDE ELEVATION
SCALE 1:100



GROUND FLOOR LAYOUT
HOUSE TYPE V (3 BED)
SCALE 1:100



FIRST FLOOR LAYOUT
SCALE 1:100

Rev.	Comments	Date
A.	Amended Plans	06.17

Drawing Recorded	CDM Principal Designer
Status	PLANNING
Client	NEWCASTLE EMLYN PARTNERSHIP

HARRIES
PLANNING DESIGN MANAGEMENT

Hendon, Glynysarn, Pembrokeshire, SA41 3UP, Wales
T: 01239 891 499 F: 01239 891 455 www.hpdn.co.uk

Project: Proposed Housing at
Maes Y Derw,
Newcastle Emlyn,
Carmarthenshire.

THE BRITISH ASSESSMENT BUREAU
ISO9001
Certificate No. 016601

Drawing Title:	PLANS & ELEVATIONS AS PROPOSED						
Scale:	As Shown	Drawn By:	DJH	Checked:	WTH	Date:	22.01.2008

W/18258



W/18258



W/18258



W/18258



W/18258



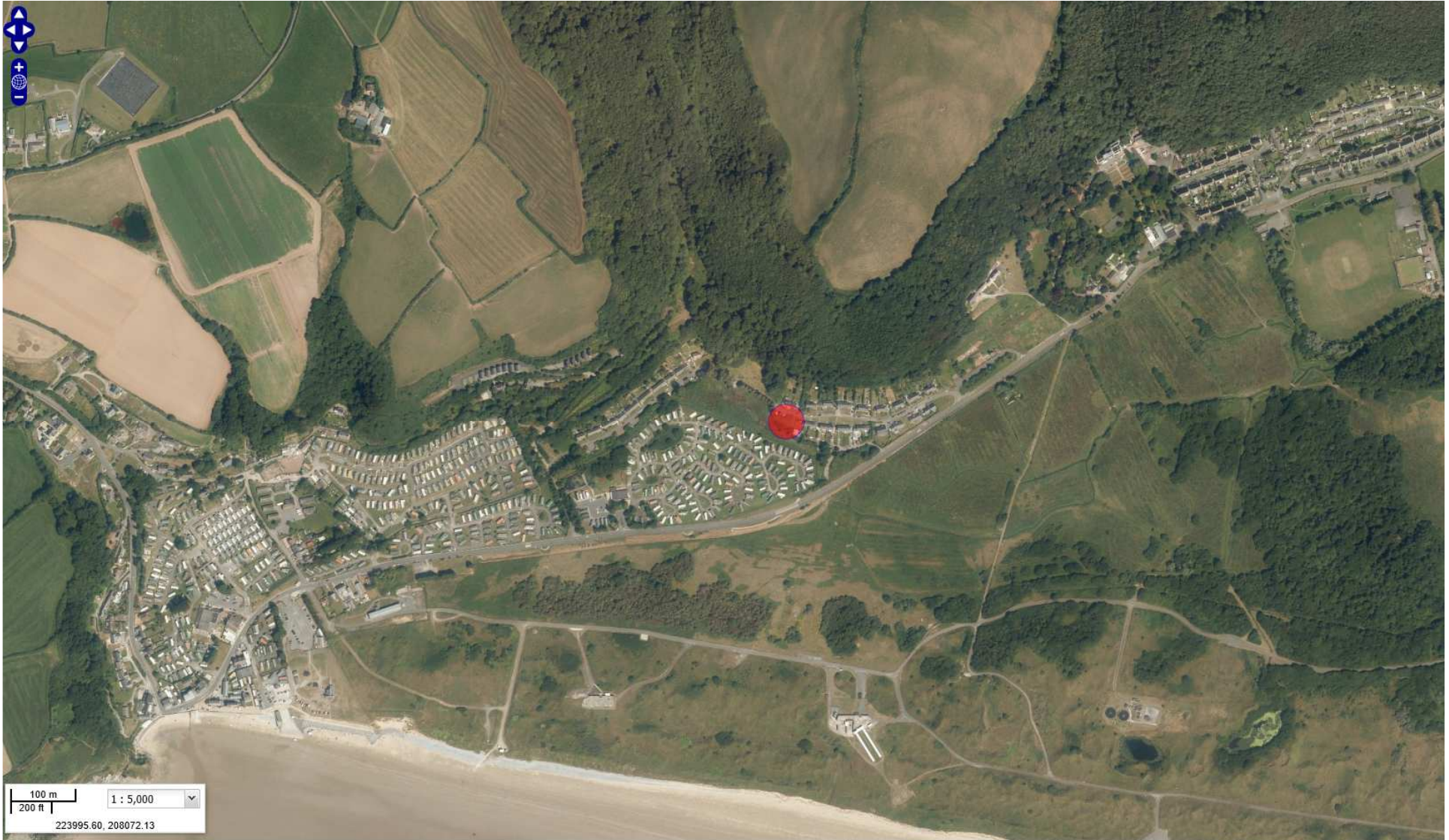
W/18258



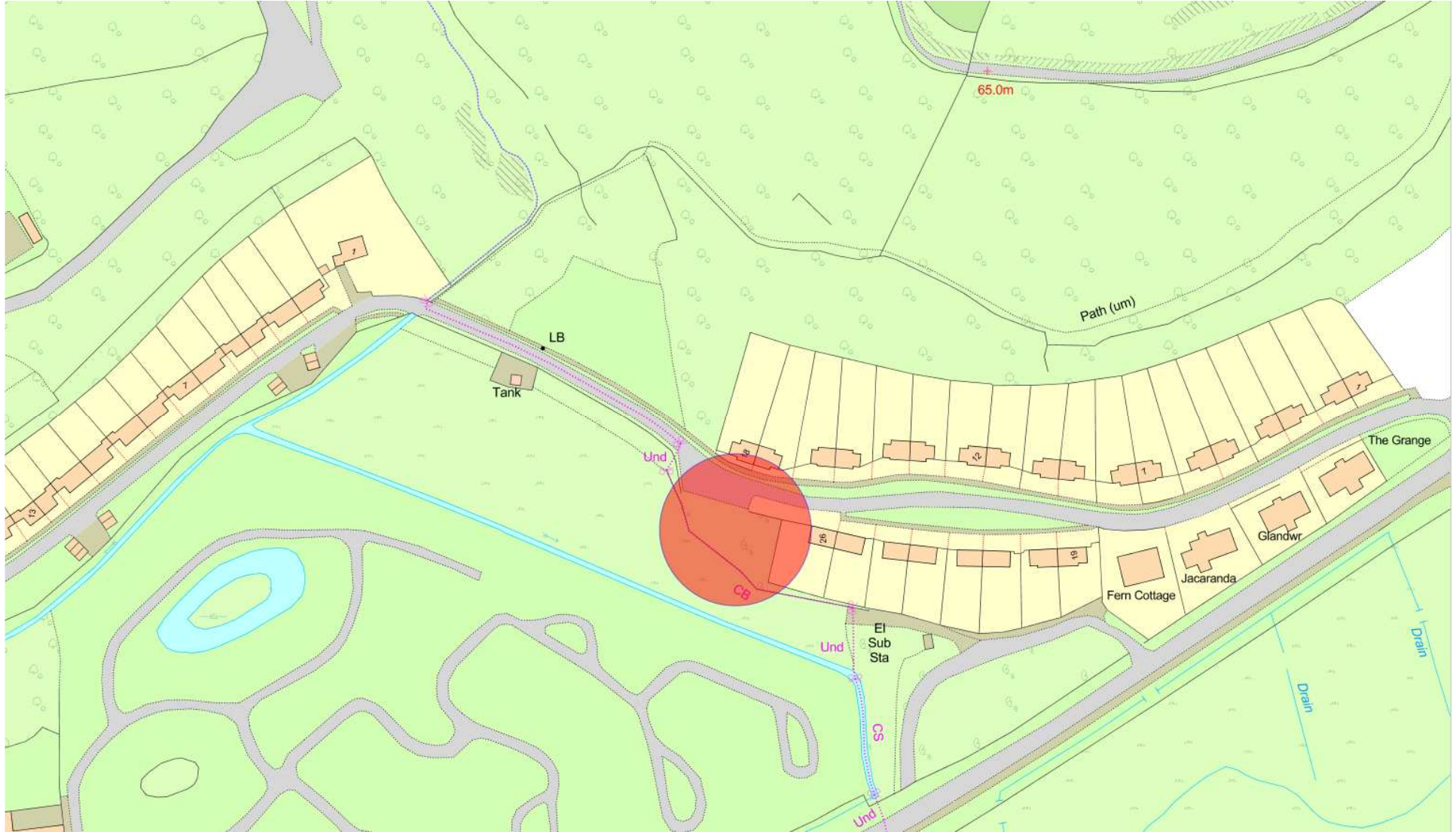


W/37321

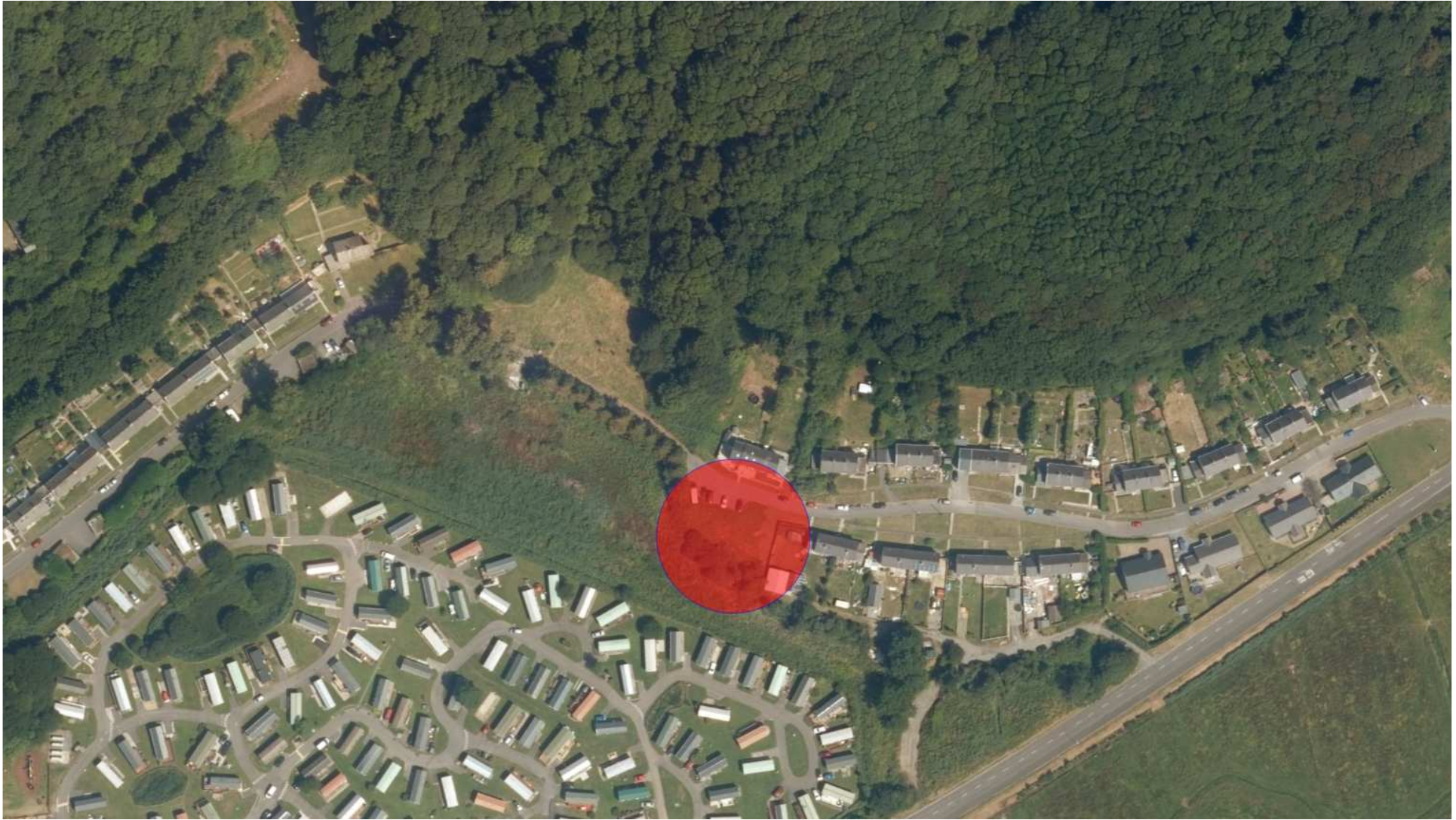
W/37321



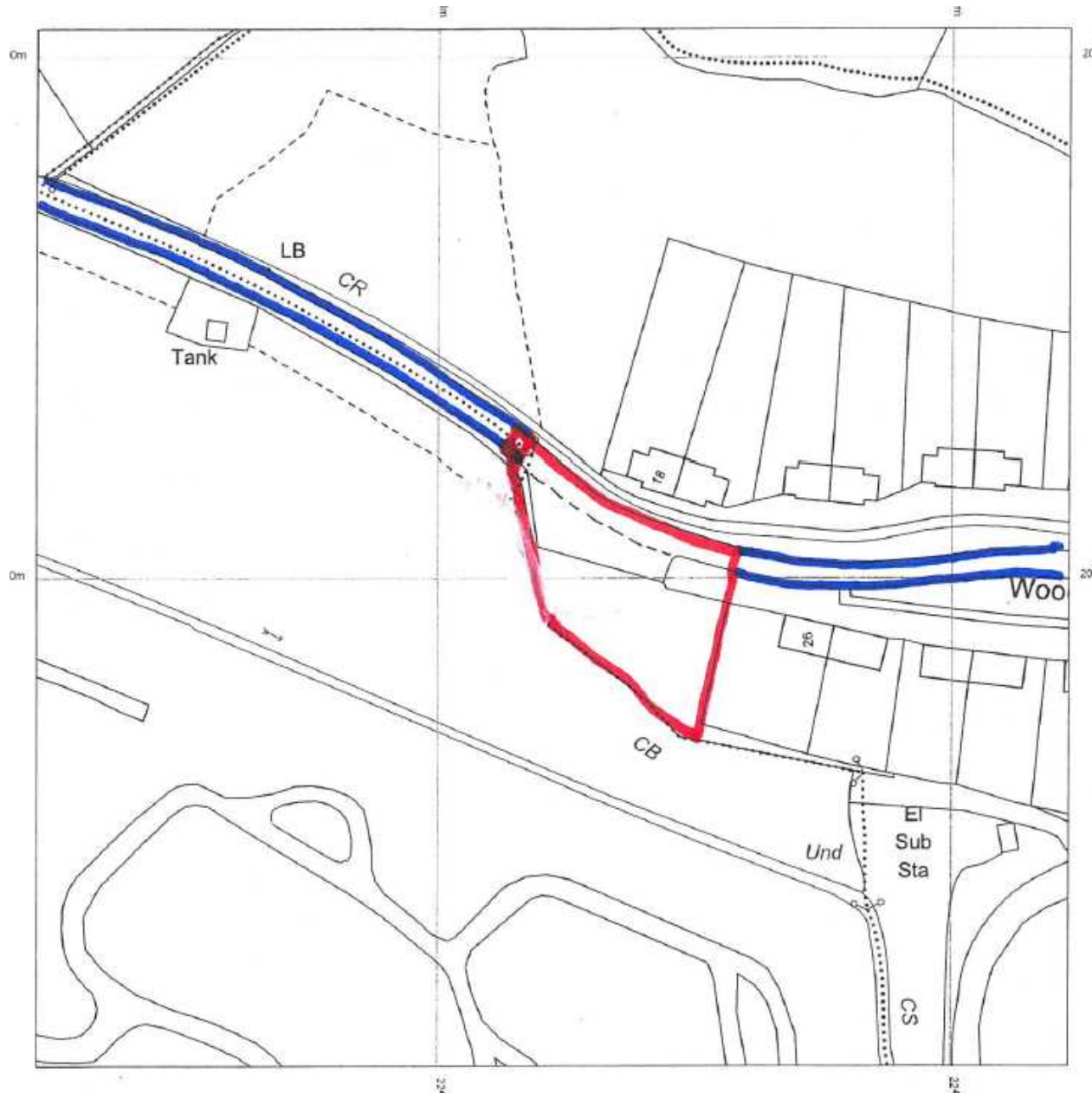
W/37321



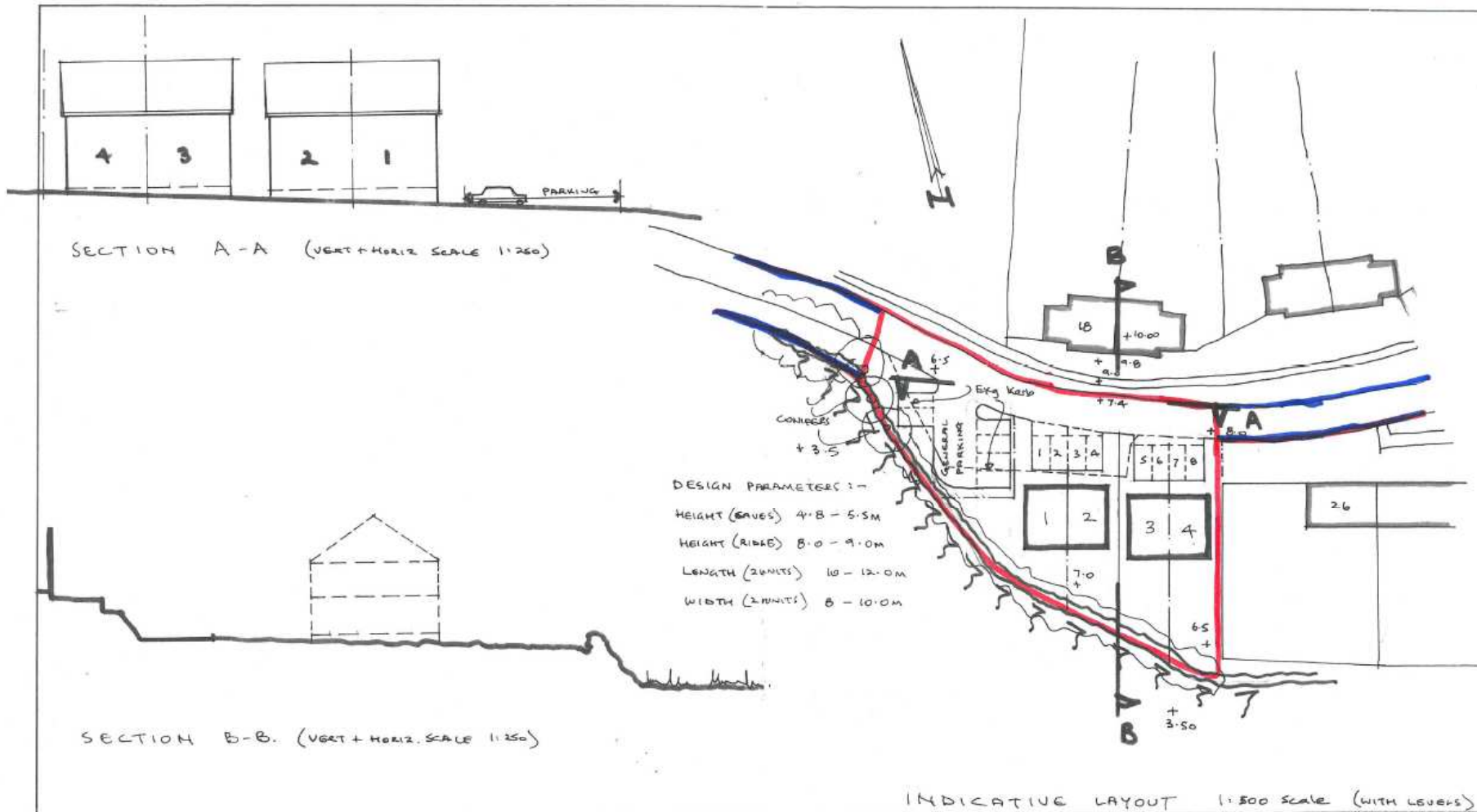
W/37321



W/37321



W/37321

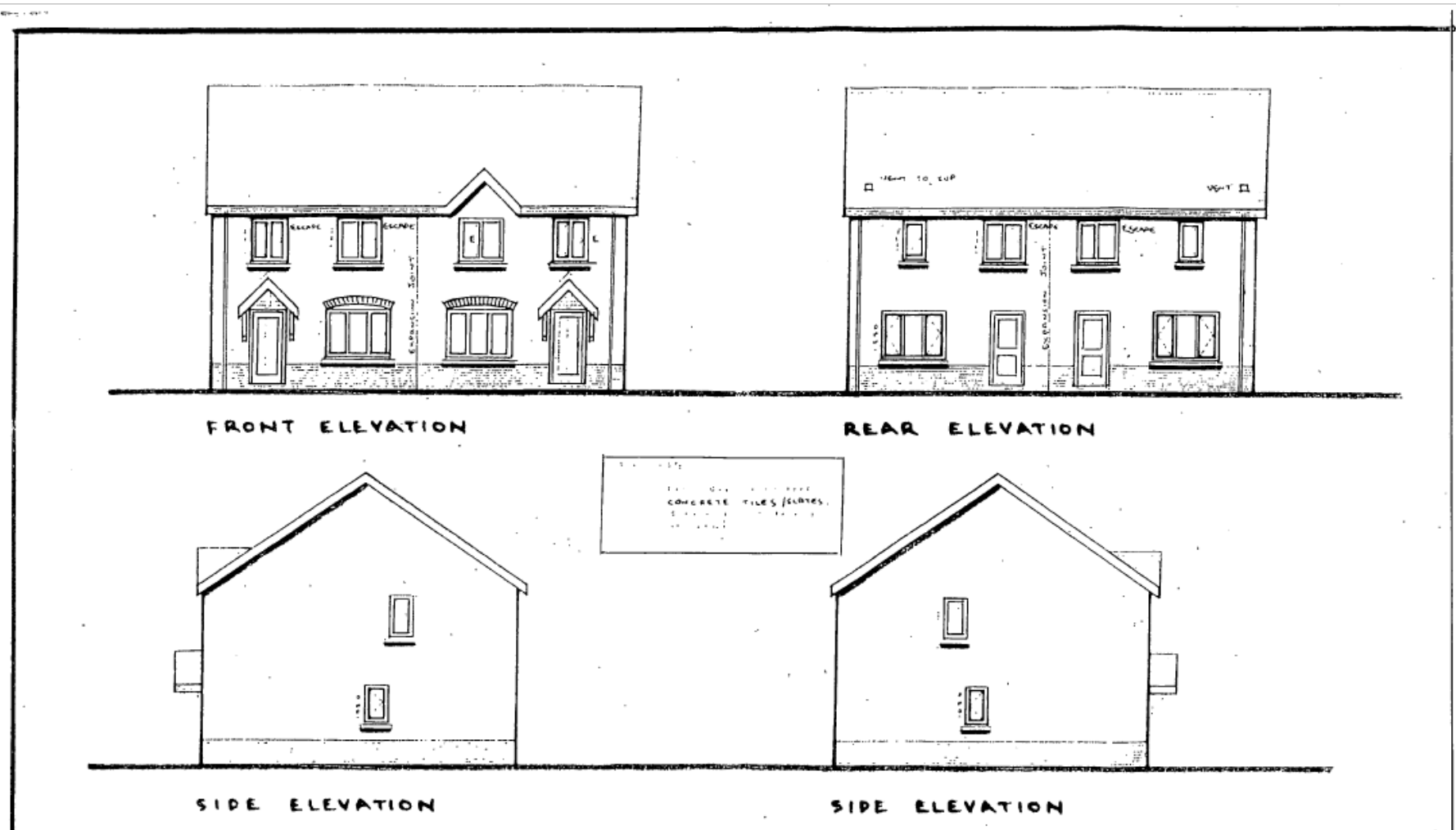


adjacent to no. 26, Wood End.
PROPOSED HOUSING + PARKING

partneriaeth
 HAROLD METCALFE partnership
 32 Spilman Street, Carmarthen, Dyfed, Wales tel. Carmarthen (01267) 237427 fax. 238693
 pensaer : architect

Job Title DUKES MEADOW / WOOD END	Scale 1:500	Date	Revision A
Drawing Title SITE PLAN + PROPOSED HOUSING	Drawn AD	Checked	Dr. No. C/4652/2A

W/37321



**DUKES MEADOW
PENDINE** INDICATIVE LAYOUT

partneriaeth HAROLD METCALFE partnership		pensaer : architect
32 Spilman Street, Carmarthen, Dyfed, Wales tel. Carmarthen (01267) 237427 fax. 238693		
Job Title	Scale	Revision
	Date	
Drawing Title	Drawn	Dr. No. C/4652/
	Checked	

W/37321



W/37321



W/37321



W/37321



W/37321



W/37321



W/37321



W/37321



W/37321



W/37321



W/37321



W/37321



W/37321



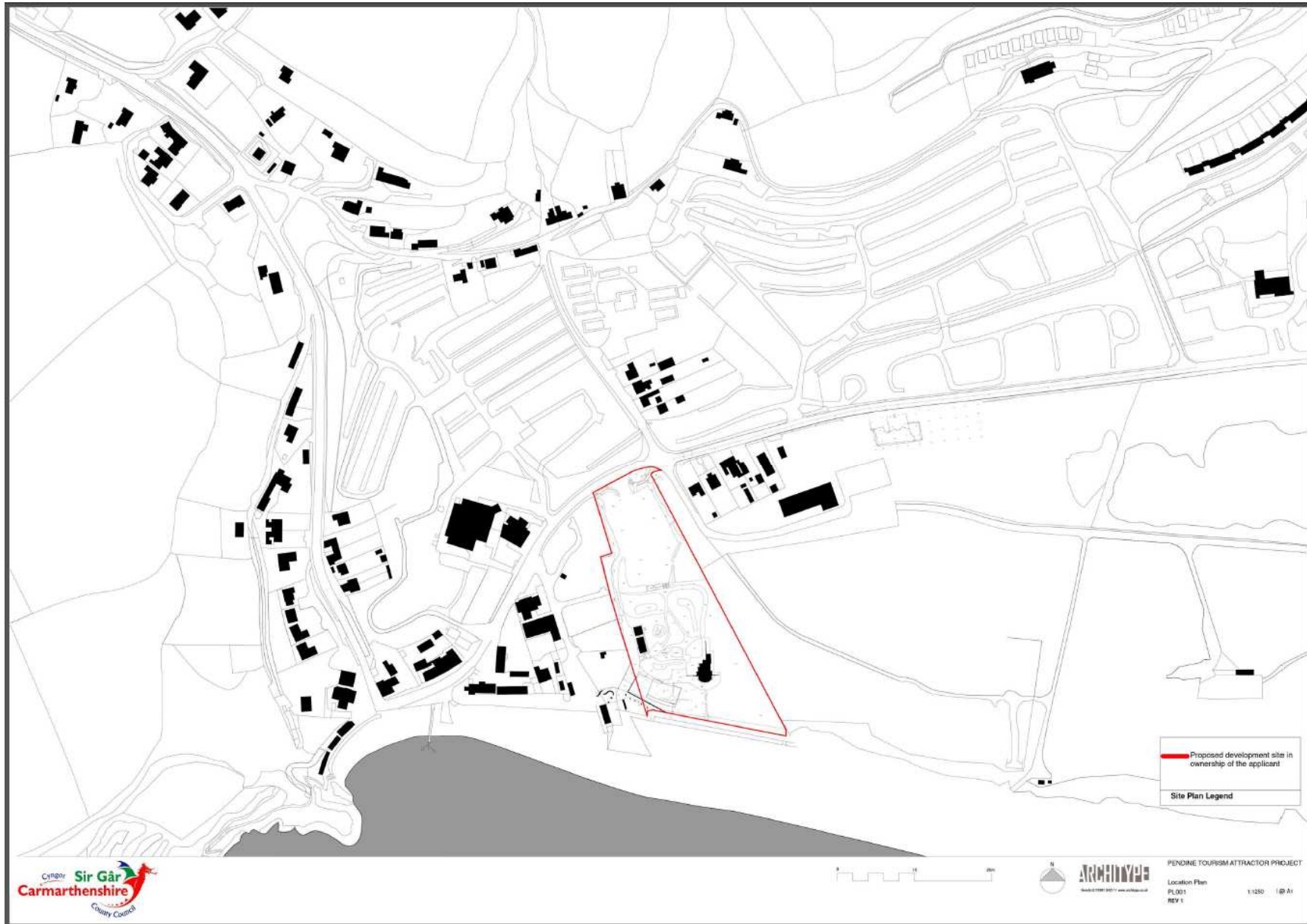
W/37321



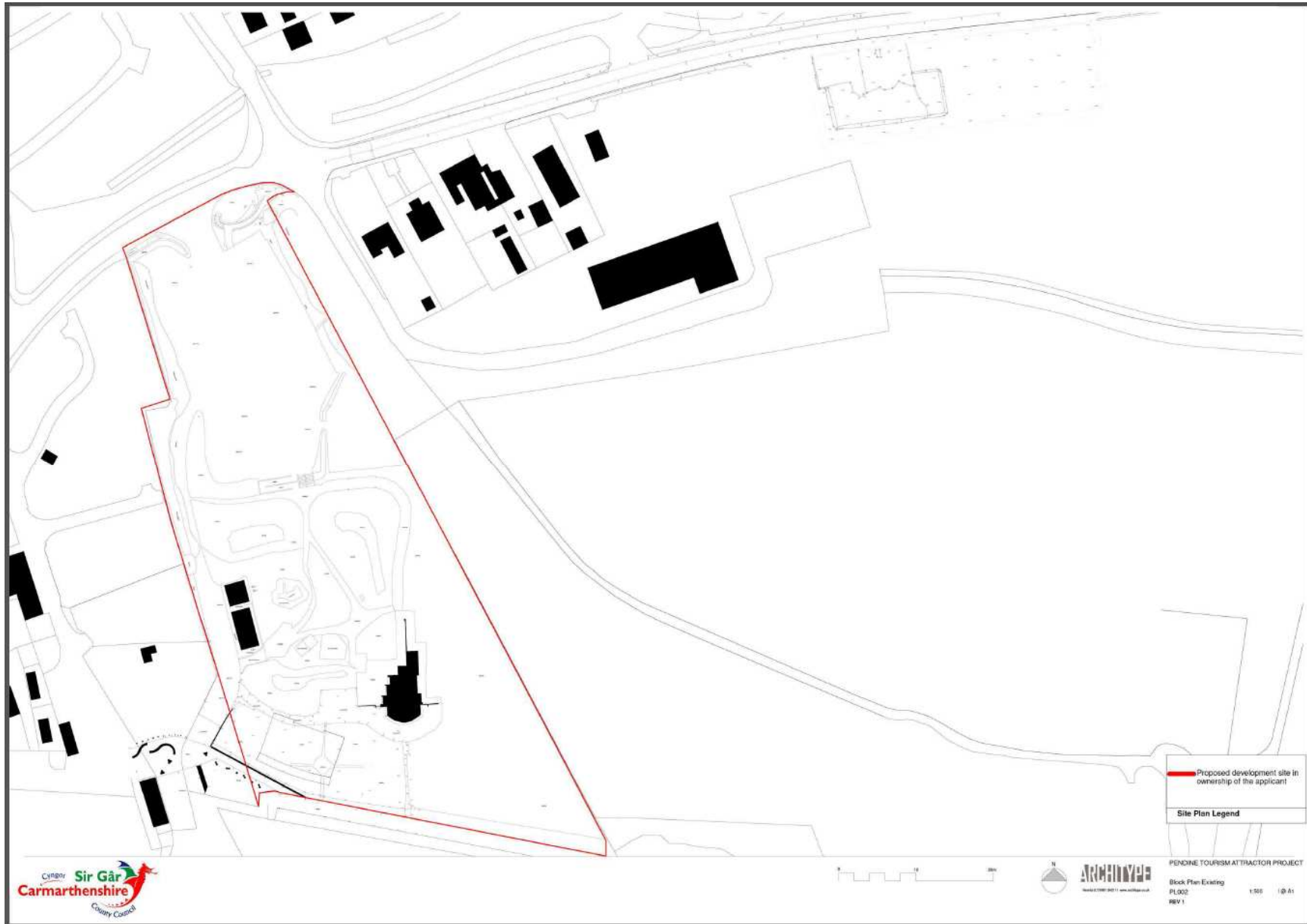


W/37415

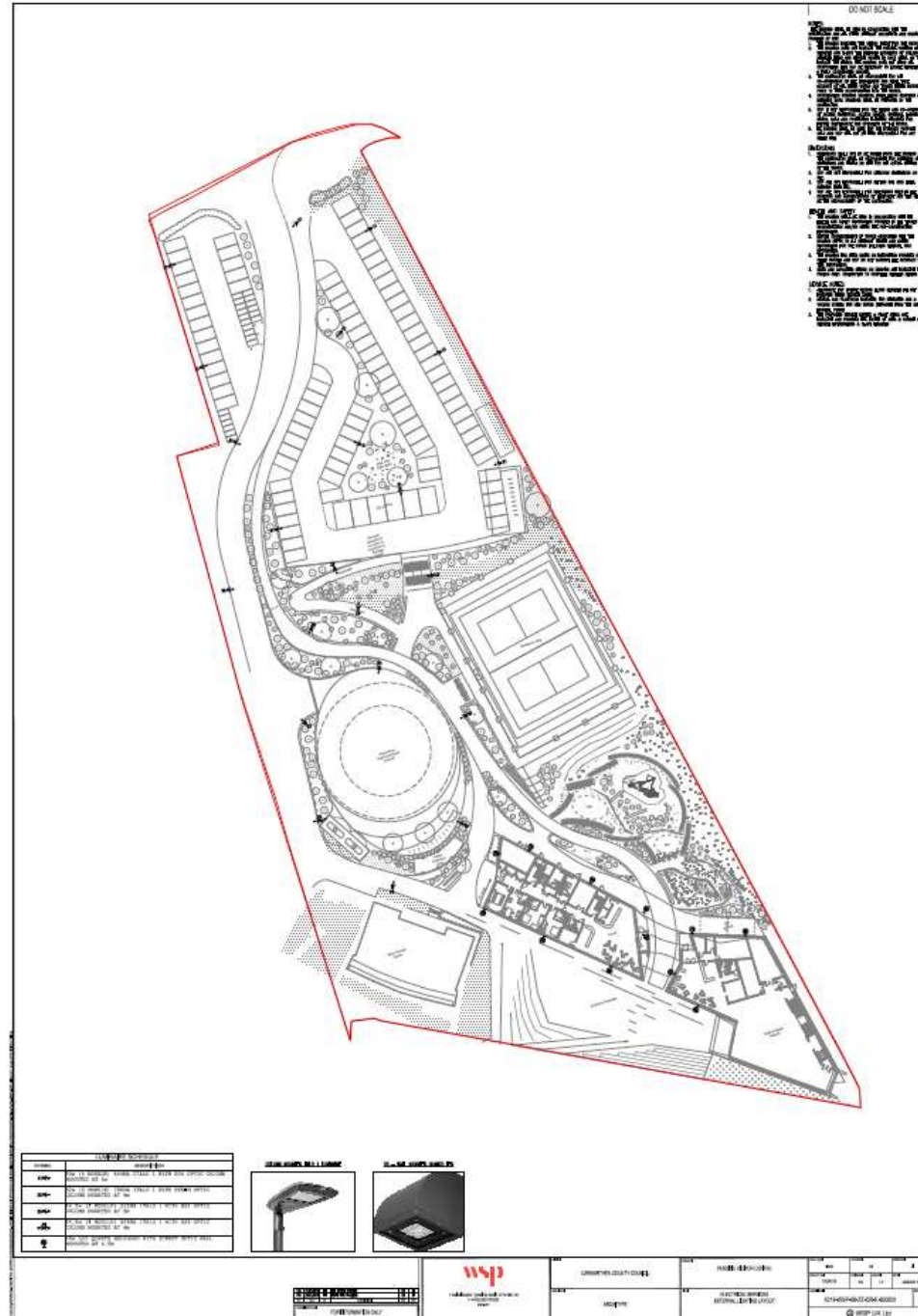
W/37415



W/37415



W/37415



DO NOT SCALE

1. ALL DIMENSIONS ARE TO FACE UNLESS OTHERWISE NOTED.

2. ALL DIMENSIONS ARE TO FACE UNLESS OTHERWISE NOTED.

3. ALL DIMENSIONS ARE TO FACE UNLESS OTHERWISE NOTED.

4. ALL DIMENSIONS ARE TO FACE UNLESS OTHERWISE NOTED.

5. ALL DIMENSIONS ARE TO FACE UNLESS OTHERWISE NOTED.

6. ALL DIMENSIONS ARE TO FACE UNLESS OTHERWISE NOTED.

7. ALL DIMENSIONS ARE TO FACE UNLESS OTHERWISE NOTED.

8. ALL DIMENSIONS ARE TO FACE UNLESS OTHERWISE NOTED.

9. ALL DIMENSIONS ARE TO FACE UNLESS OTHERWISE NOTED.

10. ALL DIMENSIONS ARE TO FACE UNLESS OTHERWISE NOTED.

11. ALL DIMENSIONS ARE TO FACE UNLESS OTHERWISE NOTED.

12. ALL DIMENSIONS ARE TO FACE UNLESS OTHERWISE NOTED.

13. ALL DIMENSIONS ARE TO FACE UNLESS OTHERWISE NOTED.

14. ALL DIMENSIONS ARE TO FACE UNLESS OTHERWISE NOTED.

15. ALL DIMENSIONS ARE TO FACE UNLESS OTHERWISE NOTED.

16. ALL DIMENSIONS ARE TO FACE UNLESS OTHERWISE NOTED.

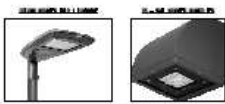
17. ALL DIMENSIONS ARE TO FACE UNLESS OTHERWISE NOTED.

18. ALL DIMENSIONS ARE TO FACE UNLESS OTHERWISE NOTED.

19. ALL DIMENSIONS ARE TO FACE UNLESS OTHERWISE NOTED.

20. ALL DIMENSIONS ARE TO FACE UNLESS OTHERWISE NOTED.

LEGEND	
Symbol	Description
Symbol	Description
Symbol	Description
Symbol	Description
Symbol	Description
Symbol	Description
Symbol	Description
Symbol	Description
Symbol	Description
Symbol	Description

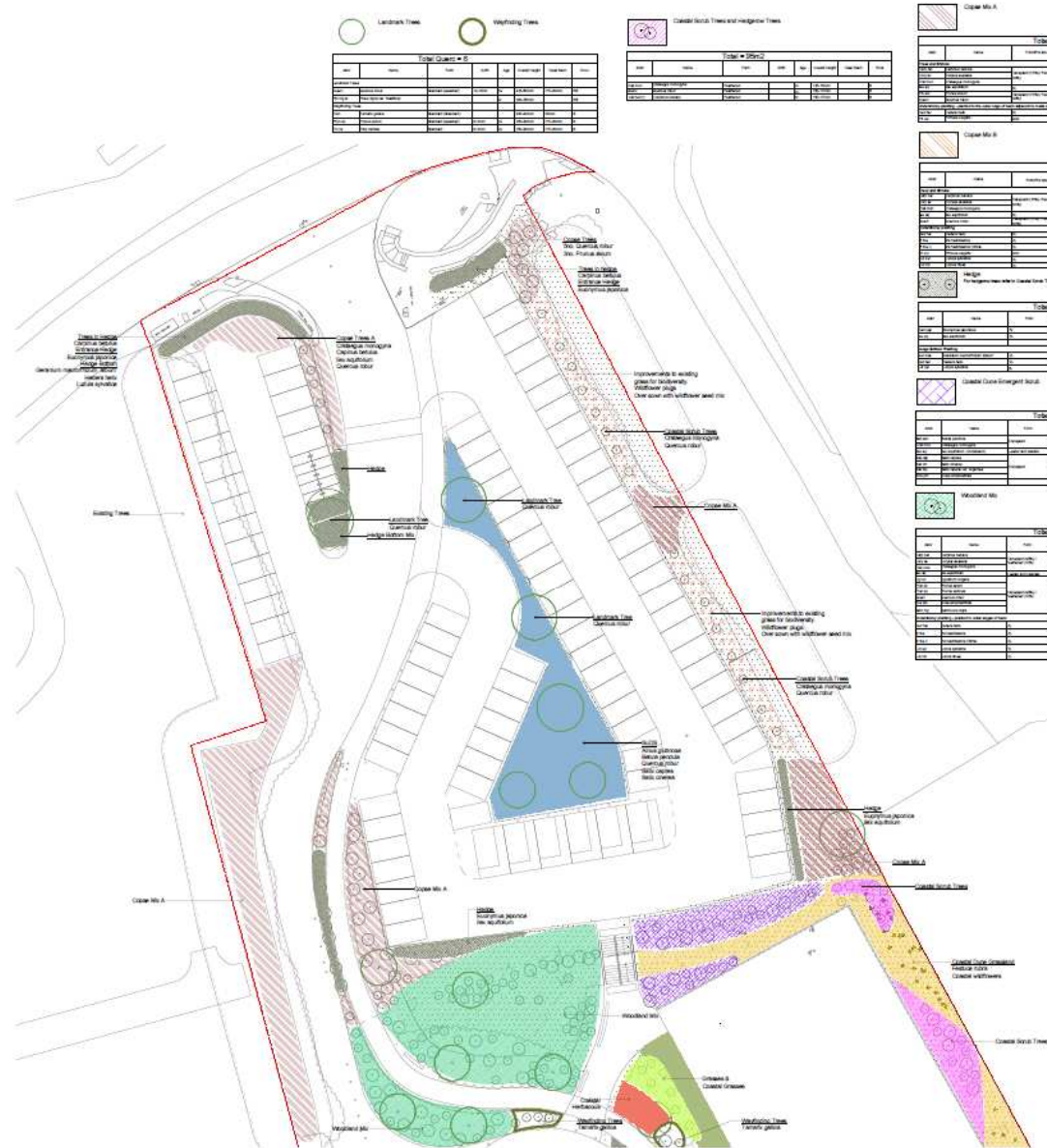


PROJECT NO.	W/37415
DATE	2024-01-15
SCALE	AS SHOWN

DESIGNED BY	WSP
CHECKED BY	WSP
DATE	2024-01-15

PROJECT NO.	W/37415
DATE	2024-01-15
SCALE	AS SHOWN

W/37415



Legend: Landmark Trees (Green circle), Weeping Trees (Yellow circle)

TOTAL QUANTITY											
NO.	SYMBOL	DESCRIPTION	NO.	SYMBOL	DESCRIPTION	NO.	SYMBOL	DESCRIPTION	NO.	SYMBOL	DESCRIPTION
1	(Green Circle)	Landmark Tree	10	(Yellow Circle)	Weeping Tree	20	(Red Circle)

TOTAL QUANTITY											
NO.	SYMBOL	DESCRIPTION	NO.	SYMBOL	DESCRIPTION	NO.	SYMBOL	DESCRIPTION	NO.	SYMBOL	DESCRIPTION
1	(Red Circle)

Climax M1A

NO.	SYMBOL	DESCRIPTION	NO.	SYMBOL	DESCRIPTION	NO.	SYMBOL	DESCRIPTION	NO.	SYMBOL	DESCRIPTION
1	(Red Circle)

Climax M1B

NO.	SYMBOL	DESCRIPTION	NO.	SYMBOL	DESCRIPTION	NO.	SYMBOL	DESCRIPTION	NO.	SYMBOL	DESCRIPTION
1	(Red Circle)

Climax M1C

NO.	SYMBOL	DESCRIPTION	NO.	SYMBOL	DESCRIPTION	NO.	SYMBOL	DESCRIPTION	NO.	SYMBOL	DESCRIPTION
1	(Red Circle)

Climax M1D

NO.	SYMBOL	DESCRIPTION	NO.	SYMBOL	DESCRIPTION	NO.	SYMBOL	DESCRIPTION	NO.	SYMBOL	DESCRIPTION
1	(Red Circle)

Climax M1E

NO.	SYMBOL	DESCRIPTION	NO.	SYMBOL	DESCRIPTION	NO.	SYMBOL	DESCRIPTION	NO.	SYMBOL	DESCRIPTION
1	(Red Circle)

Climax M1F

NO.	SYMBOL	DESCRIPTION	NO.	SYMBOL	DESCRIPTION	NO.	SYMBOL	DESCRIPTION	NO.	SYMBOL	DESCRIPTION
1	(Red Circle)

Climax M1G

NO.	SYMBOL	DESCRIPTION	NO.	SYMBOL	DESCRIPTION	NO.	SYMBOL	DESCRIPTION	NO.	SYMBOL	DESCRIPTION
1	(Red Circle)

Climax M1H

NO.	SYMBOL	DESCRIPTION	NO.	SYMBOL	DESCRIPTION	NO.	SYMBOL	DESCRIPTION	NO.	SYMBOL	DESCRIPTION
1	(Red Circle)

Climax M1I

NO.	SYMBOL	DESCRIPTION	NO.	SYMBOL	DESCRIPTION	NO.	SYMBOL	DESCRIPTION	NO.	SYMBOL	DESCRIPTION
1	(Red Circle)

Climax M1J

NO.	SYMBOL	DESCRIPTION	NO.	SYMBOL	DESCRIPTION	NO.	SYMBOL	DESCRIPTION	NO.	SYMBOL	DESCRIPTION
1	(Red Circle)

Climax M1K

NO.	SYMBOL	DESCRIPTION	NO.	SYMBOL	DESCRIPTION	NO.	SYMBOL	DESCRIPTION	NO.	SYMBOL	DESCRIPTION
1	(Red Circle)

Climax M1L

NO.	SYMBOL	DESCRIPTION	NO.	SYMBOL	DESCRIPTION	NO.	SYMBOL	DESCRIPTION	NO.	SYMBOL	DESCRIPTION
1	(Red Circle)

Climax M1M

NO.	SYMBOL	DESCRIPTION	NO.	SYMBOL	DESCRIPTION	NO.	SYMBOL	DESCRIPTION	NO.	SYMBOL	DESCRIPTION
1	(Red Circle)

Climax M1N

NO.	SYMBOL	DESCRIPTION	NO.	SYMBOL	DESCRIPTION	NO.	SYMBOL	DESCRIPTION	NO.	SYMBOL	DESCRIPTION
1	(Red Circle)

Climax M1O

NO.	SYMBOL	DESCRIPTION	NO.	SYMBOL	DESCRIPTION	NO.	SYMBOL	DESCRIPTION	NO.	SYMBOL	DESCRIPTION
1	(Red Circle)

Climax M1P

NO.	SYMBOL	DESCRIPTION	NO.	SYMBOL	DESCRIPTION	NO.	SYMBOL	DESCRIPTION	NO.	SYMBOL	DESCRIPTION
1	(Red Circle)

Climax M1Q

NO.	SYMBOL	DESCRIPTION	NO.	SYMBOL	DESCRIPTION	NO.	SYMBOL	DESCRIPTION	NO.	SYMBOL	DESCRIPTION
1	(Red Circle)

Climax M1R

NO.	SYMBOL	DESCRIPTION	NO.	SYMBOL	DESCRIPTION	NO.	SYMBOL	DESCRIPTION	NO.	SYMBOL	DESCRIPTION
1	(Red Circle)

DISCLAIMER
 COE DESIGN LANDSCAPE ARCHITECTURE
 231 PENDINE TOURISM ATTRACTOR PROJECT
 SOFT LANDSCAPE STRATEGY (2 of 3)
 231-CDLA-A1-00-ORL-0401 00
 09.05.2018
 JC

KEY
 EXISTING TREES TO BE RETAINED
 EXISTING TREES TO BE REMOVED
 PROPOSED TREES
 PROPOSED GRASSES AND SOFT PLANTING
 GRASS LAYERS, WALK LINES, BENCHES AND COASTAL / CLIFF GRASSLANDS
 EXISTING CLIFF GRASSLANDS
 EXISTING LEVELS
 PROPOSED LEVELS
 TOP OF WALL HEIGHT

Scale: 1:500
North Point: [Compass rose]

COE DESIGN
 landscape architecture

W/37415



- Circulation
 - 2 Person Bedroom
 - 4 Person Bedroom
 - Sanitary
 - Large Space
 - Storage
 - Staff Area
- Area Use Legend

W/37415



- Circulation
 - 2 Person Bedroom
 - 4 Person Bedroom
 - Sanitary
 - Large Space
 - Storage
 - Staff Area
- Area Use Legend

W/37415



② Roof Plan
1:100



① First Floor Plan
1:100

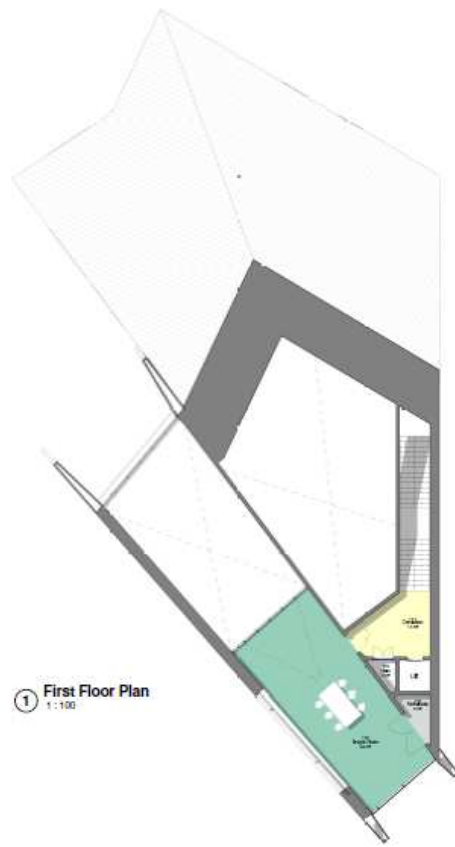
- ◻ Circulation
 - ◻ 2 Person Bedroom
 - ◻ 4 Person Bedroom
 - ◻ Sanitary
 - ◻ Large Space
 - ◻ Storage
 - ◻ Staff Area
- Area Use Legend

W/37415

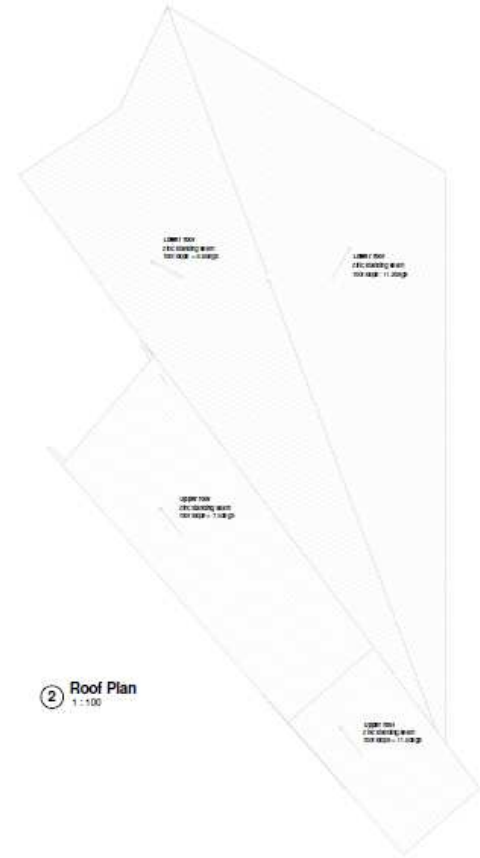


- Circulation
 - Sanitary
 - Large Space
 - Storage
 - Staff Area
- Area Use Legend

W/37415



① First Floor Plan
1:100



② Roof Plan
1:100

- Circulation
 - Sanitary
 - Large Space
 - Storage
 - Staff Area
- Area Use Legend

W/37415



- 01 Sands of Speed Museum**
Two disabled employee spaces, 18no cycle stands, 4881 between south of events space and of the museum (2 no.)
 - 02 Hostel**
Two disabled employee spaces (by museum), 8no cycle stands south of events space
 - 03 Exhibition Esplanade**
Car exhibits and other installations, events, exhibitions for the Museum plus major beach events. Car access for the Museum off the access road. Seating steps provide views to the beach.
 - 04 Dune Gardens**
Interpretation, exhibition display boxes, native plants, seating, covered canopy, shelter spaces for buffering the wind & sand, installations, music and sound sculpture, temporary art.
 - 05 Events area**
Flexible space for events, festivals, display and community
 - 06 Dunes Adventure Play Area**
Continues with informal play to Museum gardens.
 - 07 Recycling, Waste and Outdoor Equipment Store**
 - 08 Access Road leading to Slipway and Beach**
 - 09 Primary Pedestrian Route**
Access across the beach from the bus stop and car park via a land bridge to the Events area, Street, Museum and promenade. Native grasses line the route with wayfinding trees, sculpture, seats.
 - 10 Main Car Park**
92no car spaces, 6no disabled spaces, 22no Motorcycle spaces, 1no cycle stands
 - 11 Overflow Car Park**
 - 12 Informal Sand Area**
For informal games, volleyball etc.
 - 13 Parry Thomas Centre**
Cafe and cafe outside seating area
- D** Disabled Parking Space
 — Application Site Boundary

Project	Scale	1:500 @ A1
Pendine Tourism Attractor Project	Date	22.02.18
Sketch No	Drawn	JdB / JC
231-SK-010_03		



Title: Landscape Masterplan



coe design
landscape architecture

1 Lead Designer
2 Designers
3 Designers

W/37415



1 North Elevation
1:100



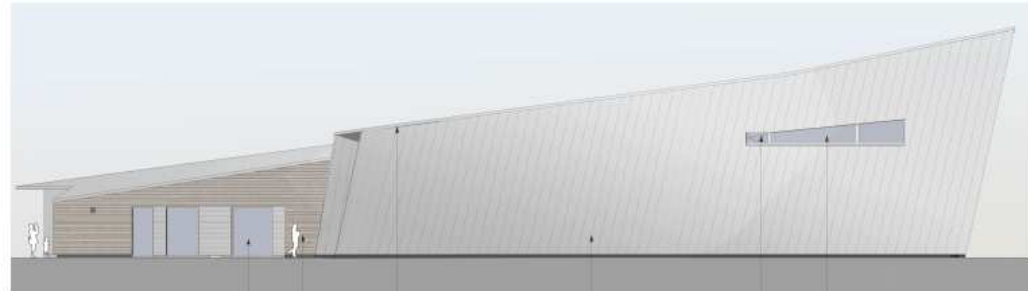
2 Entrance 1
1:100



3 Entrance 2
1:100



4 West Elevation
1:100



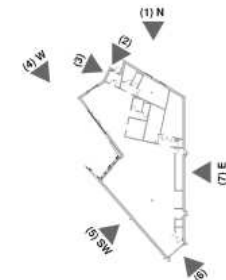
5 South West Elevation
1:100



7 Window
1:100



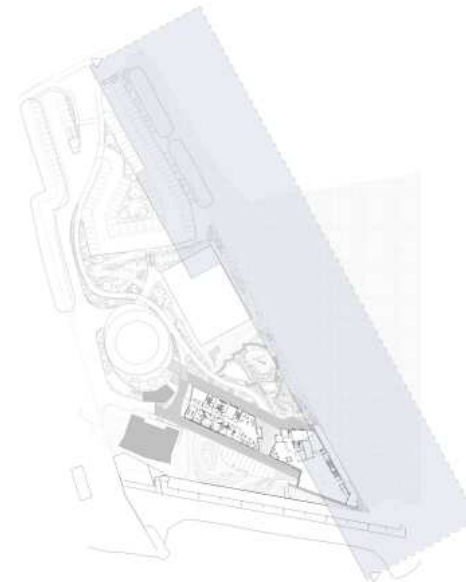
6 East Elevation
1:100



W/37415



A Site Section
1 : 500



2 Key Plan
1 : 1000

W/37415



Indicative 3D View. Proposed landscape not shown.

W/37415



Indicative 3D View. Proposed landscape not shown.

W/37415



W/37415



W/37415



W/37415



W/37415



W/37415



W/37415



W/37415



W/37415



W/37415



W/37415



W/37415



W/37415



W/37415



W/37415



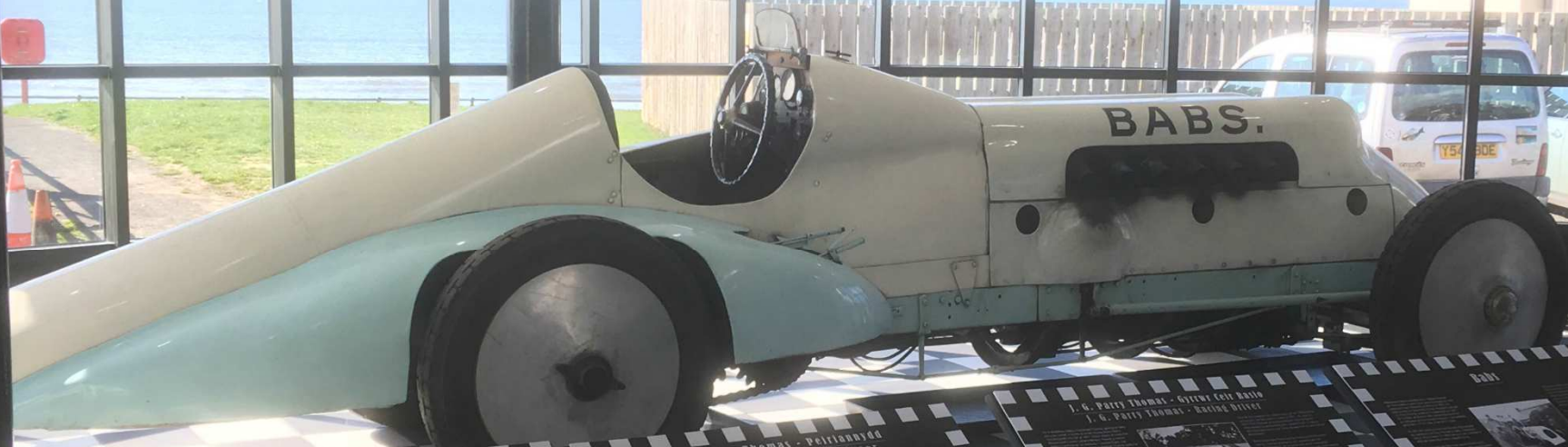
W/37415



W/37415



W/37415



J.G. Parry Thomas

Parry Thomas was a Welsh racing driver and engineer. He was born in 1892 and died in 1920. He was a pioneer in the development of the open-wheel race car. He was the first to use a steering wheel and a gear shift. He was also the first to use a steering wheel and a gear shift. He was also the first to use a steering wheel and a gear shift.



**J.G. Parry Thomas - Peiriohydd
J.G. Parry Thomas - Engineer**

Parry Thomas was a Welsh racing driver and engineer. He was born in 1892 and died in 1920. He was a pioneer in the development of the open-wheel race car. He was the first to use a steering wheel and a gear shift. He was also the first to use a steering wheel and a gear shift.



**J.G. Parry Thomas - Gyfnewidwr
J.G. Parry Thomas - Racing Driver**

Parry Thomas was a Welsh racing driver and engineer. He was born in 1892 and died in 1920. He was a pioneer in the development of the open-wheel race car. He was the first to use a steering wheel and a gear shift. He was also the first to use a steering wheel and a gear shift.



BABS

BABS was the name of the car. It was built by Parry Thomas. It was a single-seater open-wheel race car. It was built in 1919. It was built in 1919.



W/37415



W/37415



W/37415



W/37415



W/37415





***CEISIADAU YR ARGYMHELLIR EU
BOD YN CAEL EU GWRTHOD***

**APPLICATIONS RECOMMENDED
FOR REFUSAL**

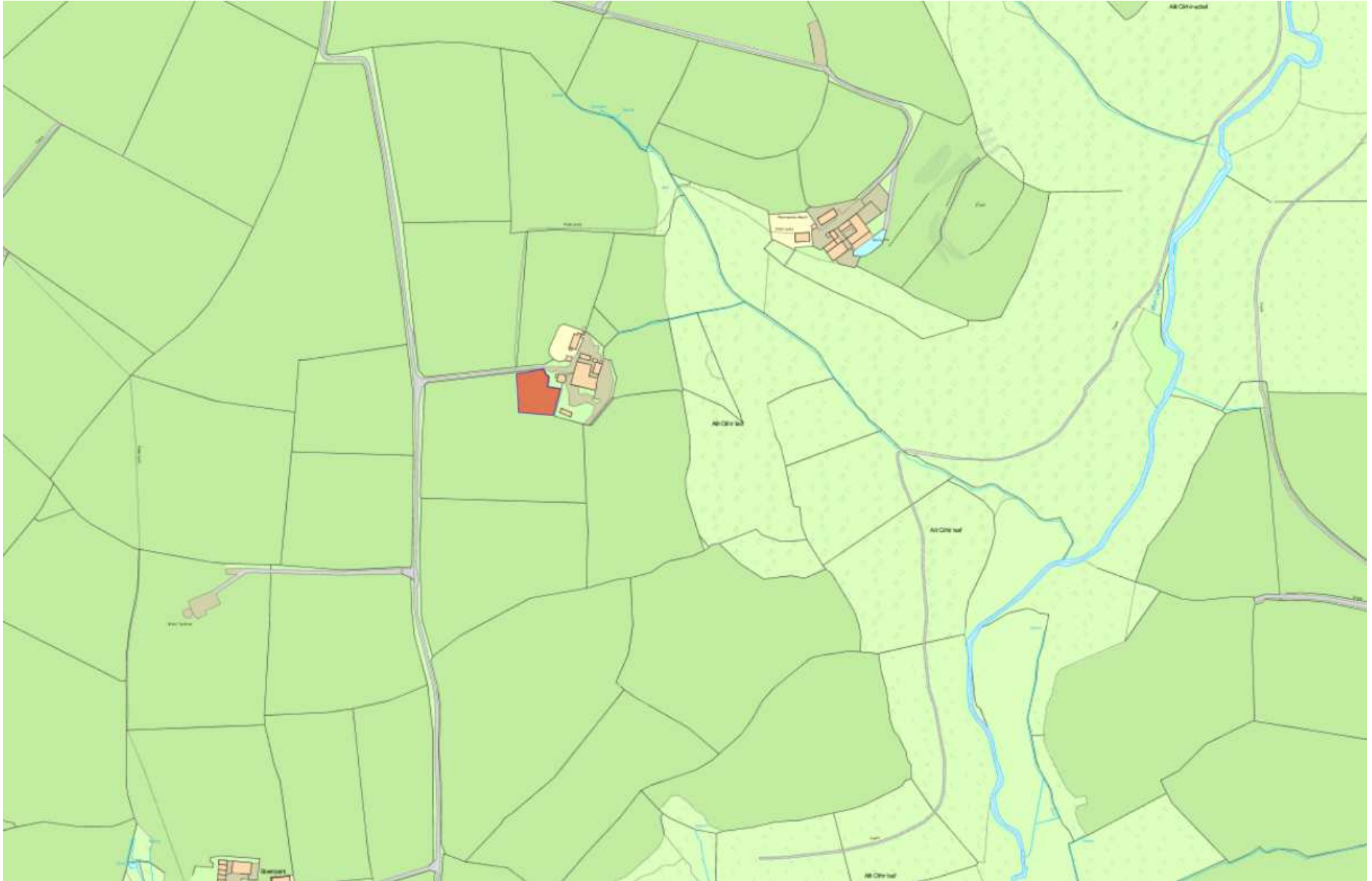


W/37135

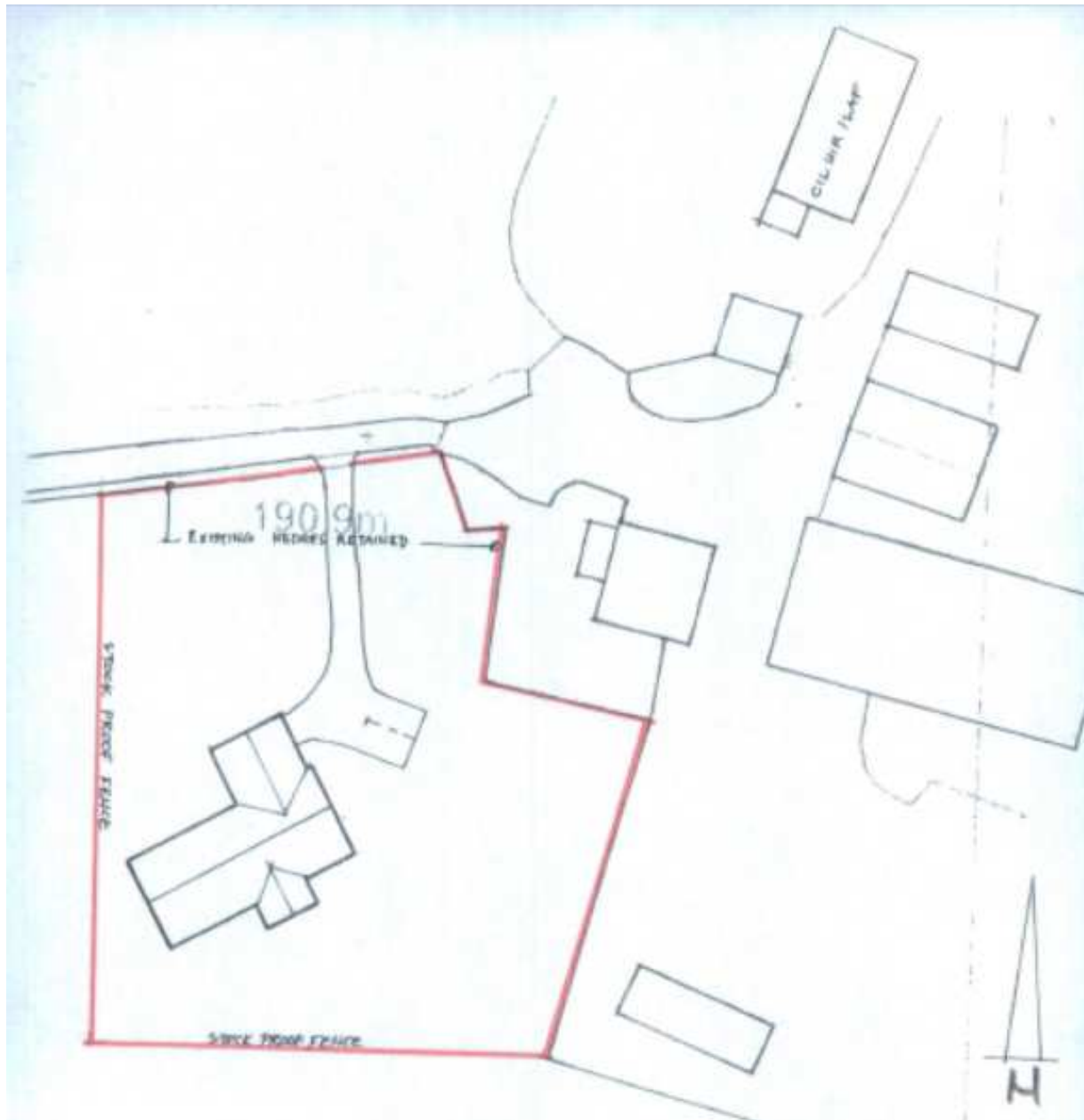
W/37135



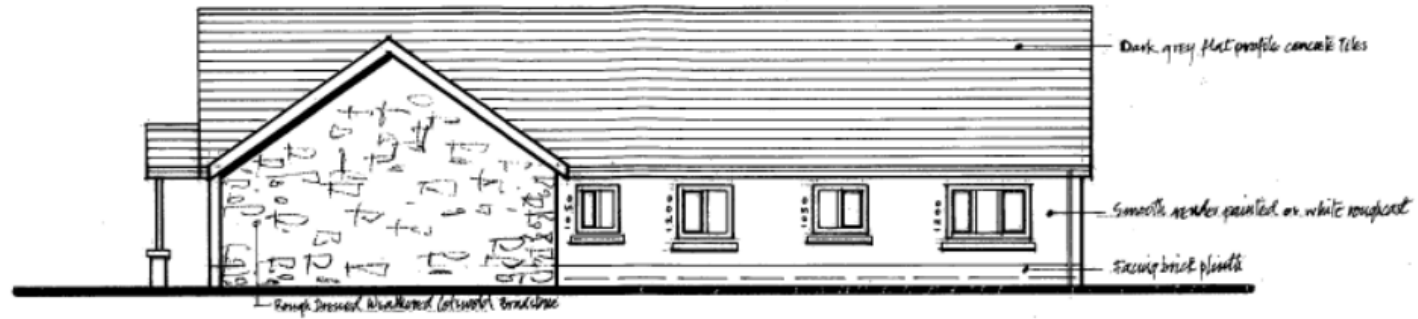
W/37135



W/37135



W/37135

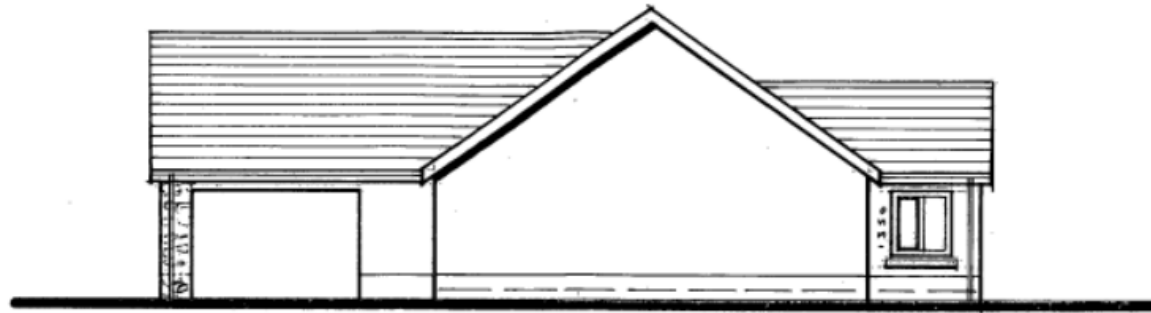


REAR ELEVATION



FRONT ELEVATION

W/37135



SIDE ELEVATION



SIDE ELEVATION

W/37135



W/37135



W/37135



W/37135

